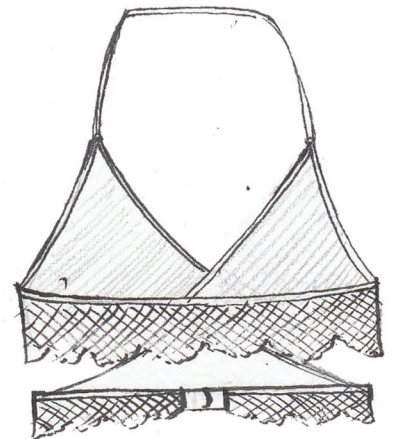
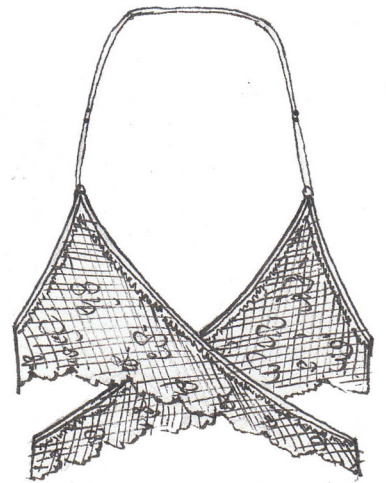


giera

BY MADALYNNE



SIERRA: A SIMPLE, WRAP-AROUND BRALETTE



OVERVIEW
SIERRA IS A SIMPLE BRALETTE THAT FEATURES A PLUNGE NECKLINE, ADJUSTABLE STRAPS AND HOOK AND EYE CLOSURE



AS SOON AS I MADE SIERRA, I RECEIVED REQUESTS TO RELEASE A PATTERN. YOU ASKED AND YOU SHALL RECEIVE! I HUNKERED DOWN FOR A FEW WEEKENDS AT MADALYNNE STUDIOS, AND AM NOW OFFERING IT AS A FREE PATTERN. I'M ALSO HOSTING A SEW ALONG. WHERE CAN YOU DOWNLOAD IT? HOW CAN YOU JOIN THE SEW ALONG? WHAT IS THE HASHTAG? READ BELOW!

OVERVIEW: Sierra is a wrap around bralette that features a plunge neckline, adjustable straps and a hook and eye closure. It has a forgiving fit, and lends itself to being layered underneath scoop arm and oversized tops and dresses.

INTENDED BRA MAKERS: The bottom of the bra is finished with a zigzag stitch that outlines the scallops of the lace. With no underbust elastic, the

support comes from compression, so this bra is intended for small chests - cup sizes AA-B.

SUGGESTED FABRICS: The pattern was designed for stretch lace with one side having a scalloped edge. Galloon lace that is at least 7" wide (8" for size LARGE) is an ideal choice. Additionally, it is meant to be made with fabric that has approximately 30-40% stretch (since the support comes from compression). Fabrics with stretch greater than 50% should be lined with fabric that has less stretch.

RECOMMEND LININGS: Stretch mesh, micro mesh or powernet.

GETTING STARTED:

PRINT PATTERN: Be sure that your print settings are not set to scale or zoom, and that you are printing at 100%. To ensure you're printing at the right size, print out the page with the test square first and



measure to ensure it is 3" x 3". If it doesn't, you will need to adjust your printer or your computers settings.

FIND YOUR SIZE: Determine your size using the size chart diagram. If you are between sizes, I suggest sizing DOWN. Since there is negative ease, you shouldn't have a problem with choosing a smaller size. Plus, the fit is very forgiving.

JOIN SEW ALONG: Join the Sierra sew along on the blog for the next steps - cutting, sewing and finishing. Updated PDF with instructions will be available after sew along.

IF YOU HAVE EXPERIENCE WITH BRA MAKING AND WANT TO COMPLETE BEFORE THE SEW ALONG, GO RIGHT AHEAD! PATTERN INCLUDES 1/4" SEAM ALLOWANCES THROUGHOUT.

SUPPLIES:

3 YARDS stretch lace with ONE scalloped edge or 2 YARDS stretch galloon lace at least 7" wide (8" if a LARGE)

1/2 YARD lining fabric

2.5 YARDS 1/4" or 3/8" plush/picot elastic

.75 YARDS 1/4" or 3/8" strap elastic

ONE 2x3 hook and eye closure

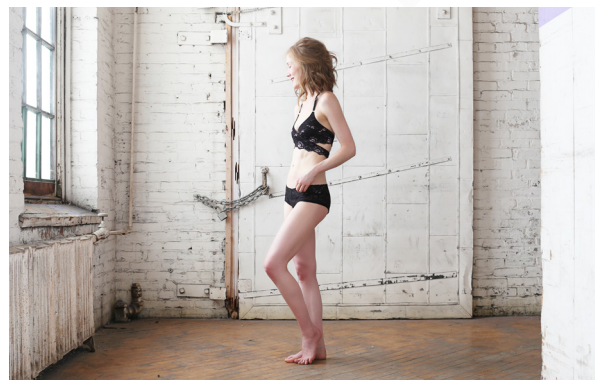
sewing machine with a zig zag stitch

duck-billed scissors (optional)

stretch needle size 11, 12 or 14

universal needle size 16

Polyester thread

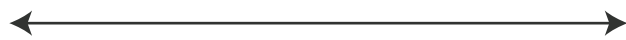


SIZE CHART - FULL BUST MEASUREMENT				
	X-SMALL	SMALL	MEDIUM	LARGE
FULL BUST	28.5-30.5 in 72.5-77.5 cm	30.5-32.5 in 77.5-82.5 cm	32.5-34.5 in 82.5-87.5 cm	34.5-36.5 in 87.5-92.5 cm



sierra

FRONT- CUT 2 (SELF AND LINING)
DIRECTION OF GREATEST STRETCH



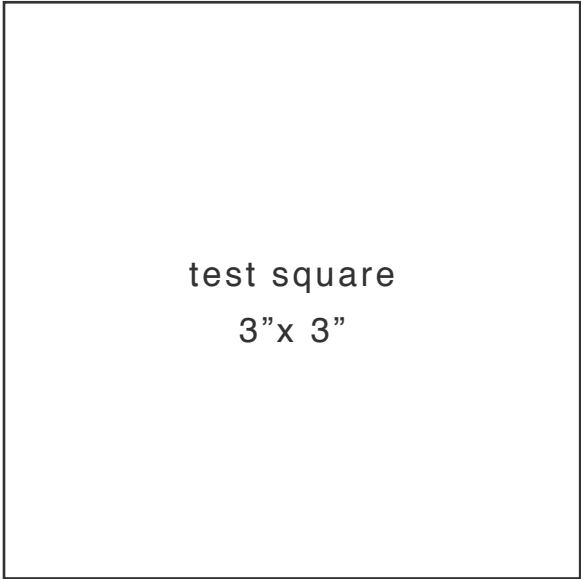
madalynne
intimates

x-small

small

medium

large



test square
3"x 3"

sierra

BACK - CUT 1 (SELF AND LINING)
DIRECTION OF GREATEST STRETCH



madalynne

intimates

x-small

small

medium

large

THANK YOU FOR MAKING A
SIERRA! BE SURE TO SHARE
YOUR BRA ON INSTAGRAM
WITH THE HASHTAG
#BRAMAKINGWITHMADALYNNE

ENTER TO WIN \$25 TO BRA
MAKING SUPPLIES BY TAGGING
BOTH OF US (@MMADALYNNE
AND @BRAMAKINGSUPPLIES)
WITH YOUR SIERRA. WINNER
WILL BE CHOSEN AT THE END OF
OCTOBER.

FASHION ILLUSTRATION BY
CHELSEY TOTTEN
CHELSEY@OUTLOOK.COM