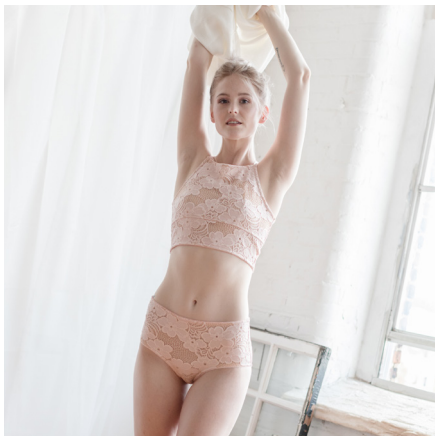


MADALYNNE INTIMATES



NOELLE

HIGH WAISTED UNDERWEAR PATTERN

TABLE OF CONTENTS

01	ABOUT MADALYNNE INTIMATES	03
02	OVERVIEW	04
03	SUPPLIES NEEDED	05
04	GETTING STARTED	07
05	CUTTING + DIRECTION OF GREATEST STRETCH	08
06	MORE MADALYNNE	17



www.madalynne.com



hello@madalynne.com



[@mmadalynne](https://www.instagram.com/mmadalynne)



[@mmadalynne](https://twitter.com/mmadalynne)



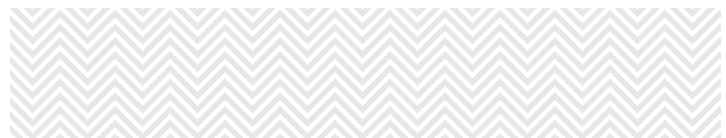
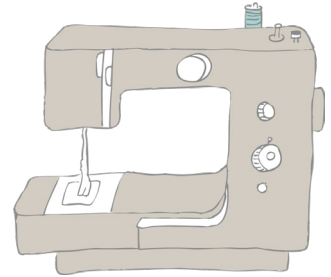
facebook.com/maddiemadalynne



pinterest.com/mmadalynne

01: ABOUT MADALYNNNE INTIMATES

Madalynne Intimates is the manifestation of Maddie Flanigan's passion for sewing and teaching lingerie. She is the founder and owner, and her budding brand offers ready made bras, bralettes, underwear, and bodysuits, as well as DIY lingerie kits, lingerie sewing patterns, and bra making workshops. Every piece is designed at Madalynne Studios and either assembled in Philadelphia or sewn in Brooklyn; made in the USA being important to the brand. Overall, Madalynne's overarching vision is to provide women with well fitting intimates that support more than just your shape. From a floral lace halter bralette to a cheeky underwear, intimates that lift your personal style. At the same time, intimates worth baring.



02:OVERVIEW

Noelle is an everyday high waisted underwear pattern. The front and back are lined with a stretch mesh for support and comfort and the waist and leg openings are finished with picot plush elastic.



03: SUPPLIES NEEDED



5/8 YD MAIN FABRIC:

This is the fabric that will be used for the outer layer of the underwear. Pattern was designed to be made with fabric that has 30-40% stretch. Recommended fabrics include stretch lace, stretch mesh, jerseys, or any fabric with 4-15% spandex.



5/8 YD LINING: This is the fabric that will be used to line the underwear. Pattern was designed to be made with lining that has 30-40% stretch. Recommended linings include stretch mesh, micro mesh and power net.



3 YDS PICOT PLUSH ELASTIC 1/4" OR 3/8"

WIDE: This elastic will be used to finish the waist and leg openings.



CROTCH LINING: A soft cotton jersey can be used for the crotch lining.

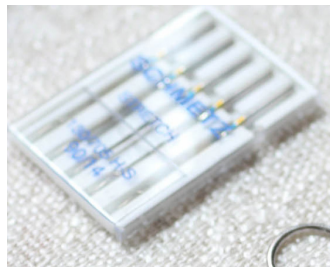


28MM ROTARY CUTTER: You can use regular scissors, but I suggest using a rotary cutter to get the most precise cut.



POLYESTER THREAD: As opposed to cotton thread, polyester thread has give. So it will stretch slightly with your fabric.





BALLPOINT NEEDLE:

Which type of needle you use depends on the type of fabric. For most stretch laces, stretch meshes, jerseys and similar stretch fabrics, suggested to use a ballpoint, stretch or microtex needle, size 11, 12 and/or 14.

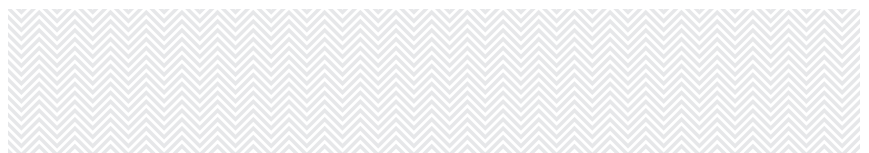


ODIF'S 505 SPRAY:

Optional, but highly suggested. Used mostly to spray baste main fabric to lining prior to cutting, but also used during sewing in lieu of pins. My favorite brand is Odif's 505 - no drying time and does not gum up on needles.



PINS: Regular pins are okay to use. You do not need special pins.



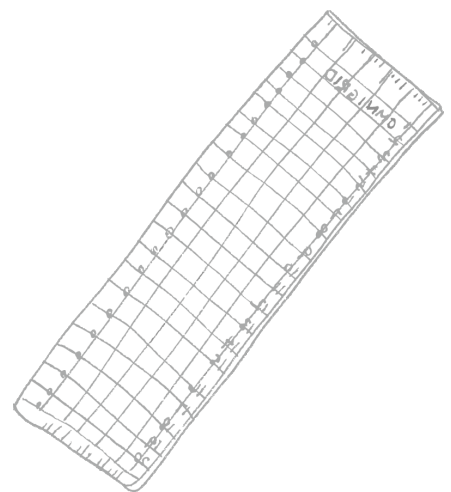
04: GETTING STARTED



PRINT PATTERN: Be sure that your printer settings are not set to scale or zoom and that you are printing at 100%. To ensure you're printing the right size, first print out the page with the test square then measure to ensure the square is 2" x 2". If it isn't, you may need to adjust your printer settings.

SEAM ALLOWANCES: All seam allowances are 1/4" unless stated otherwise.

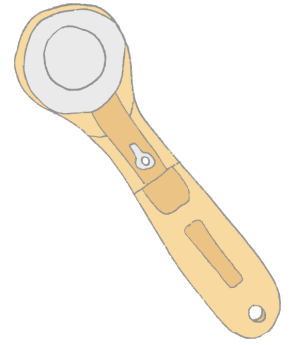
FIND YOUR SIZE: Determine your size using the size chart below. If you are between sizes, I suggest sizing UP.



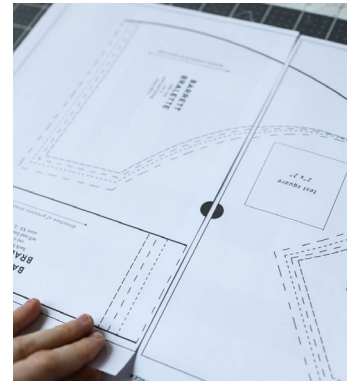
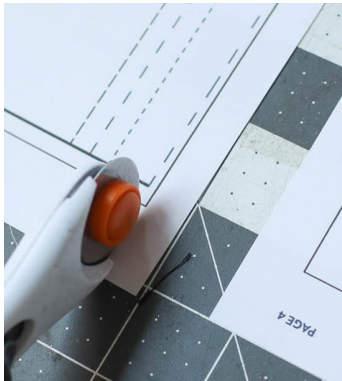
UNDERWEAR

NATURAL WAIST	23-25 in	25-27 in	27-29 in	29-31 in	31-33 in	33-38 in	38-41 in
HIP (ACROSS FULLEST PART)	33-35 in	35-37 in	37-39 in	39-41 in	41-43 in	43-46 in	46-50 in
	XS	S	M	L	XL	2XL	3XL

05: CUTTING + DIRECTION OF STRETCH



CUT PATTERN: Follow the instructions to print your pattern. Even though the directions state it, be sure that your test square measures 2" x 2". After, use a pair of paper scissors or a rotary cutter to cut along the black line on the right or the left edge. Then, overlap or butt the sheets together so that the circles align. Tape together. Refer to the 3 photos below for reference. Next, find and cut out your size using the size chart.



CUT FABRIC: Cutting fine fabrics such as stretch mesh and lace can be really difficult. It's like cutting chiffon – lots of shifting! To make it easier, use a temporary spray adhesive such as Odif's 505 to spray baste the main fabric and the lining fabric together prior to cutting. See photo below. You won't permanently adhere them – the glue will wear off in a short amount of time and/or during washing.

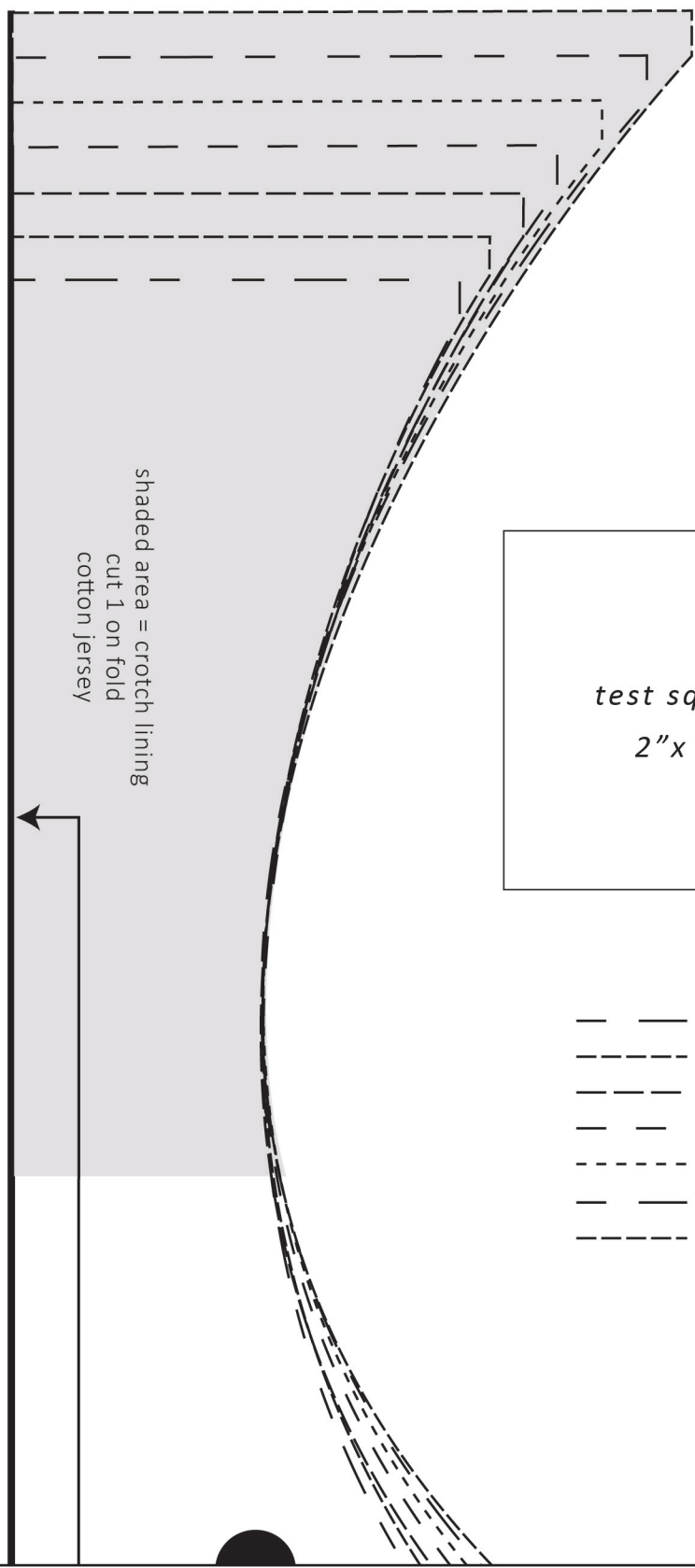
If you spray baste, I suggest cutting and sewing within a few days because if not, the glue will wear off and what you did was just a waste of time. For Barrett, spray baste the self and the lining for the center front cups only. Leave the lining and the self for the side cups and the back band NOT GLUED. You'll see why later.



DIRECTION OF STRETCH: In a woven fabric, grainline indicates the direction of the fabric that has the **least** amount of stretch. In most cases, patterns are aligned with this line. In bra making, patterns are cut according to the direction of greatest stretch (DOGS). So, when looking at the pattern for Noelle, lines with arrows indicate DOGS, not grainline.

To find the DOGS on your fabric, pull lengthwise and crosswise. What has more stretch? On stretch fabrics, there is either a stretch in one direction, called a 2-way stretch, or a stretch in all directions, called a 4-way stretch.

If you're using a 2-way stretch fabric for your Barrett, make sure that the DOGS lines on the pattern align with the direction of your fabric that stretches MORE for both SELF and LINING. If you're using a 4-way stretch, you can disregard the lines and cut in any direction.



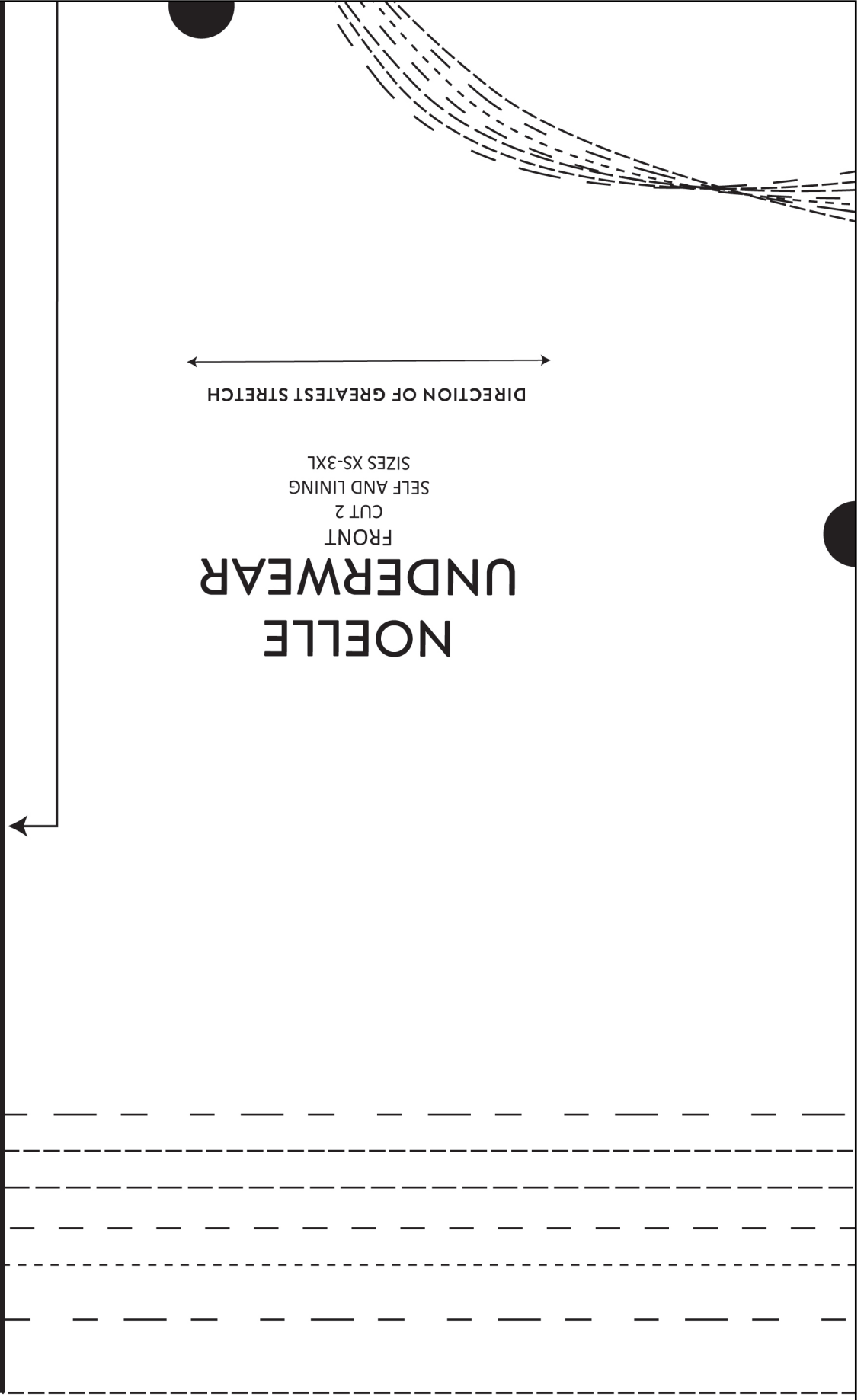
test square
2"x 2"

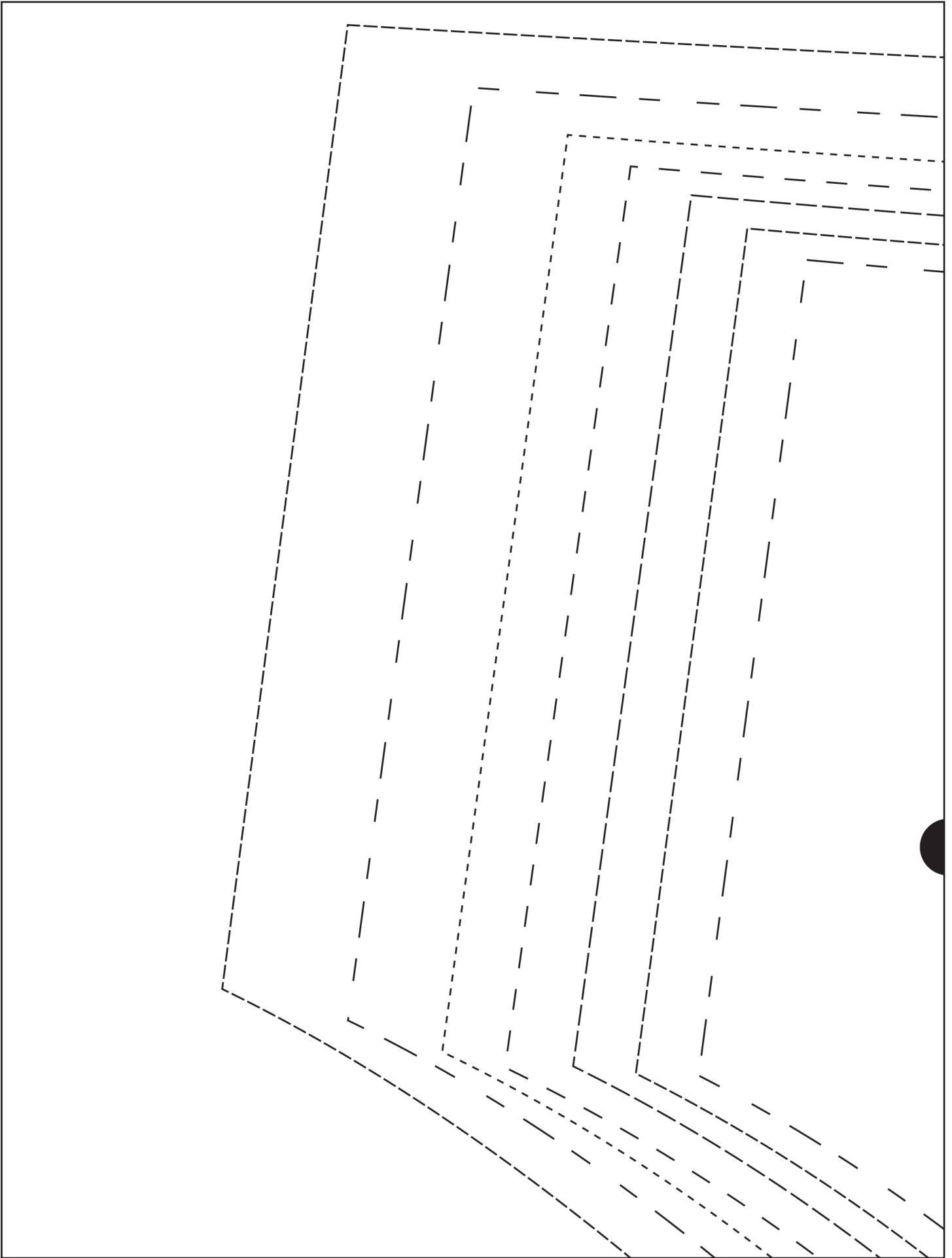
- — X-SMALL
- - - - - SMALL
- · - · - MEDIUM
- - - - - LARGE
- · · · · X-LARGE
- - - - - 2XL
- - - - - 3XL

NOELLE
UNDERWEAR

FRONT
CUT 2
SELF AND LINING
SIZES XS-3XL

DIRECTION OF GREATEST STRETCH



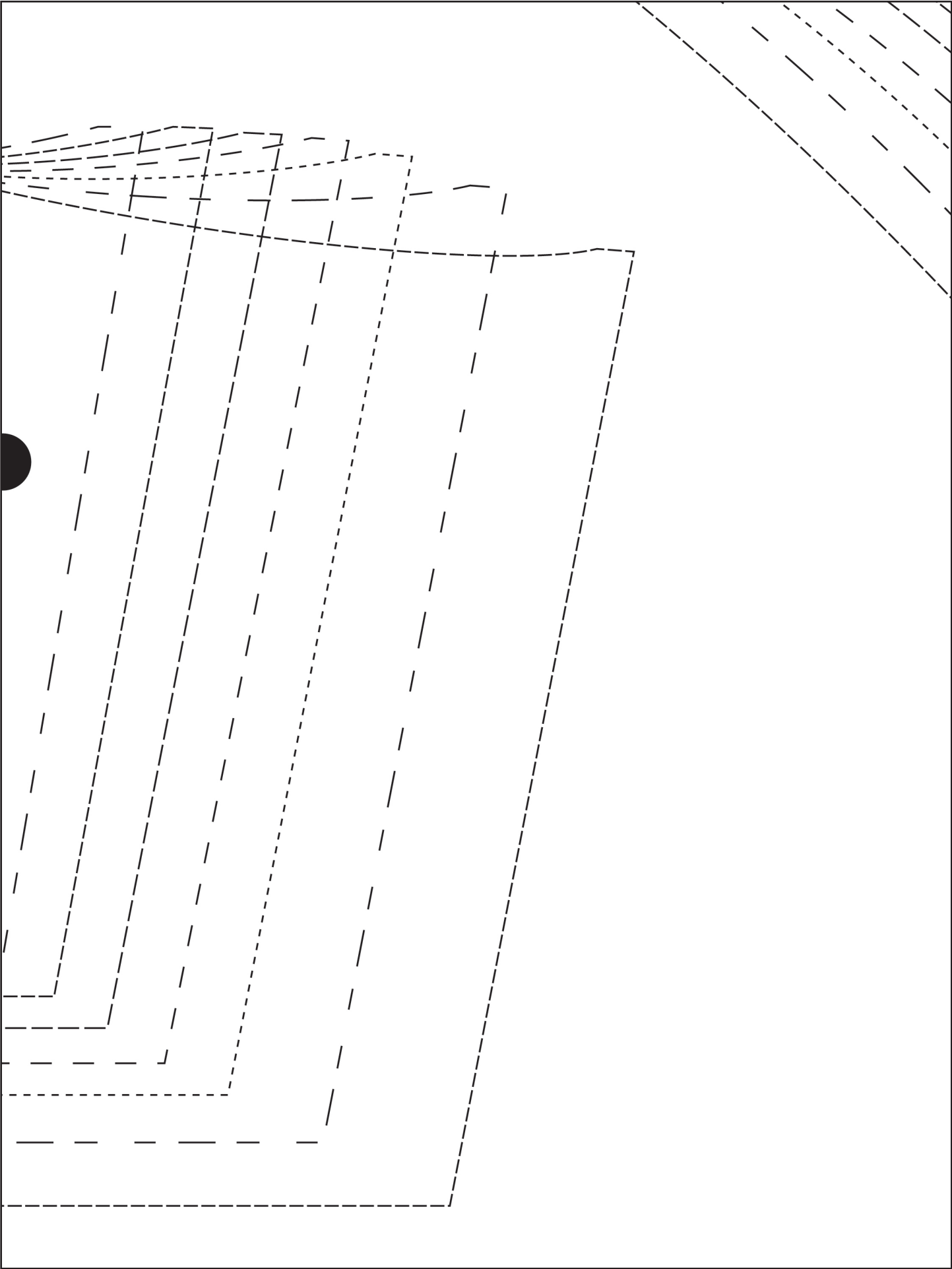


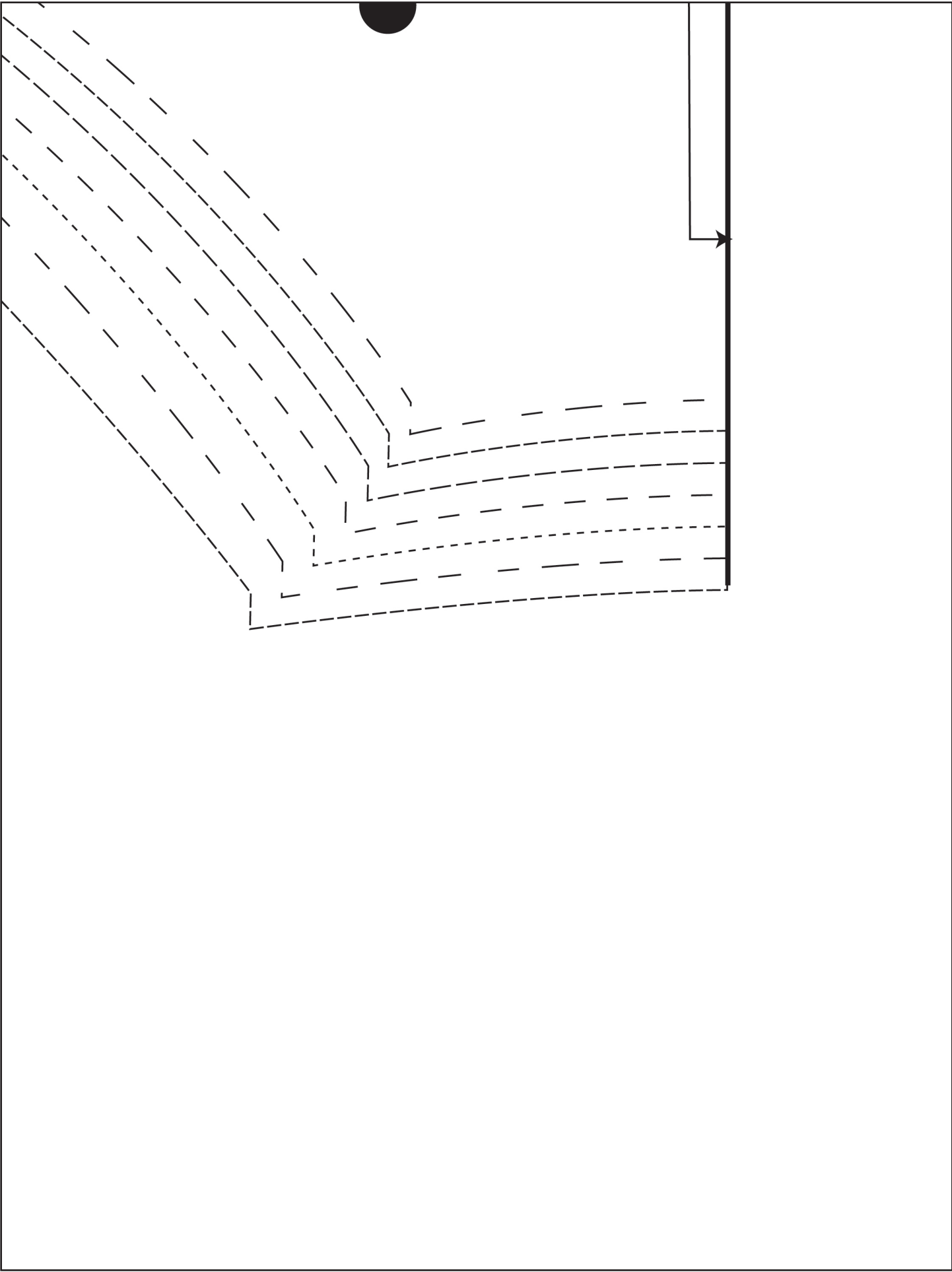


NOELLE UNDERWEAR

BACK
CUT 2
SELF AND LINING
SIZES XS-3XL

← DIRECTION OF GREATEST STRETCH →





06: MORE MADALYNNE

Did you know? Madalynne has 6 other lingerie patterns + 1 bodysuit pattern with Simplicity. Visit www.madalynne.com for more information and to shop the patterns and sewing kits.



{INSTAGRAM} @MMADALYNNE

{HASHTAG} #BRAMAKINGWITHMADALYNNE

{EMAIL} HELLO@MADALYNNE.COM